

*EAST
FREMANTLE*

THE *ROYAL* GEORGE







THE
ROYAL
GEORGE

EST.
1903

A *NEW*
ERA...





REVIVAL *OF* AN ICON

Welcome to the new Royal George. Built in 1903, the hotel is a much-loved, but long-neglected local landmark. Once the pulse of the East Fremantle community, it holds a special place in the hearts of the people in Plympton Ward. The restoration of The Royal George will return the hotel to its former glory, and with the addition of a contemporary building offering 20 inspired apartments, its revival will be complete.

Pushing the idea of modern design, the new 9-storey building will make an unapologetic statement. Bold and beautiful. Considered and nuanced. Worthy of its place. It reflects the culture of creativity in East Fremantle, delivering stunning homes in an eclectic, vibrant community.

As a sought-after and tightly-held neighbourhood, opportunities to purchase a quality, brand-new home in East Fremantle are incredibly rare. It's a residential setting that not only boasts village-style living, but also the warmth and character of a heritage backdrop. So, with respect and legacy front of mind, Saracen Properties and spaceagency are pleased to present a new era of The Royal George.



Heritage meets contemporary.
The new Royal George; main entrance, Duke Street.





East Fremantle is a special place. Close enough to Fremantle, yet tucked away. At the heart of East Fremantle, the George Street precinct is an eclectic mix of homes, cafés, bars, restaurants and local stores. Cultural, vibrant and village-style; with a sense of pride, community and identity – it's a story few areas of Perth can boast.

Sitting proudly at the top of George Street, the new Royal George residents will join this community and enjoy the rare 'sense of place' East Fremantle offers.

AT HOME IN *EAST* FREO



APARTMENTS
BY
SPACEAGENCY

Very considered and very deliberate in their approach, spaceagency has set out to enhance this landmark address, and establish a new legacy building for East Fremantle. Inspired by the shapes and forms of nearby residential rooftops, the design is not only retrospective and respectful, but also has an eye on the future; progressive, modern and beautifully nuanced.

Holding an elevated position, the building expands on varying planes as it moves away from the original hotel. Courtyards, foyers and interior spaces take their lead from the exterior form, interpreting angular planes and inclined walls in typically square areas.

Family and kitchen spaces have been orientated to maximise west-facing views towards the river and the ocean. The footprint and elevation of the site ensure most residences will have outstanding views, with lower levels enjoying outlooks across the cottage houses of East Fremantle. Upper levels enjoy views of the water. State-of-the-art soundproofing and carefully considered positioning of windows block out potential noise. The organic placement of windows and balcony openings have been designed to punctuate and capture framed moments of these views, while offering protection from the afternoon sun.

1. Building footprint and elevation ensures outstanding views towards the river and the ocean

2. Family and kitchen spaces orientated to maximise views and natural light, while offering protection from the afternoon sun



3. Contemporary design which expands as it moves away from the original hotel





Interiors are all about creating outstanding liveable spaces people will love. The triangular shape of the site — which began as a challenge — has ultimately proved to be highly rewarding, resulting in floor plans and an interior language of undeniable appeal. Forget simple box layouts, step inside and experience diagonal lines, inclined walls, curved feature walls, and rooms with varying angular planes. This shift in geometry is distinctive, unique and unapologetic.

The apartments flow effortlessly for intuitive, everyday living. Family and entertaining zones such as the living, dining and kitchen are well-planned, away from quiet, private domains such as bedrooms and bathrooms. Conjuring a sense of playfulness, subtle shifts in materiality create note-worthy transitions throughout the residences.











Fremantle Port



Reflecting the character of Fremantle, three colour schemes exude their own distinctive personality. The use of similar materials, with variations in tone and colour, offers a cohesive, yet independent aesthetic.

The Fremantle Port scheme draws on Fremantle's connection to its iconic working port. This dark palette evokes a contemplative mood, with an industrial feel rich in luxury. The Fremantle Doctor scheme features a light, breezy, coastal palette, inspired by the surrounding beaches. The final scheme Fremantle Heart reflects the vibrant and colourful lifestyle of locals, with a European touch.

Fremantle Doctor



Fremantle Heart



The apartments draw spatial connections from the inside out. Living and dining areas flow out onto outdoor balconies, where long sections of glass open to create even more space. Warm, lightweight panelled ceilings are a feature of these spaces, varying in tone for each scheme. Windows across both sides of the building utilise natural light and cross ventilation, maximising panoramic outlooks. Retracted balconies provide protection from the wind and sun while maintaining privacy and views.

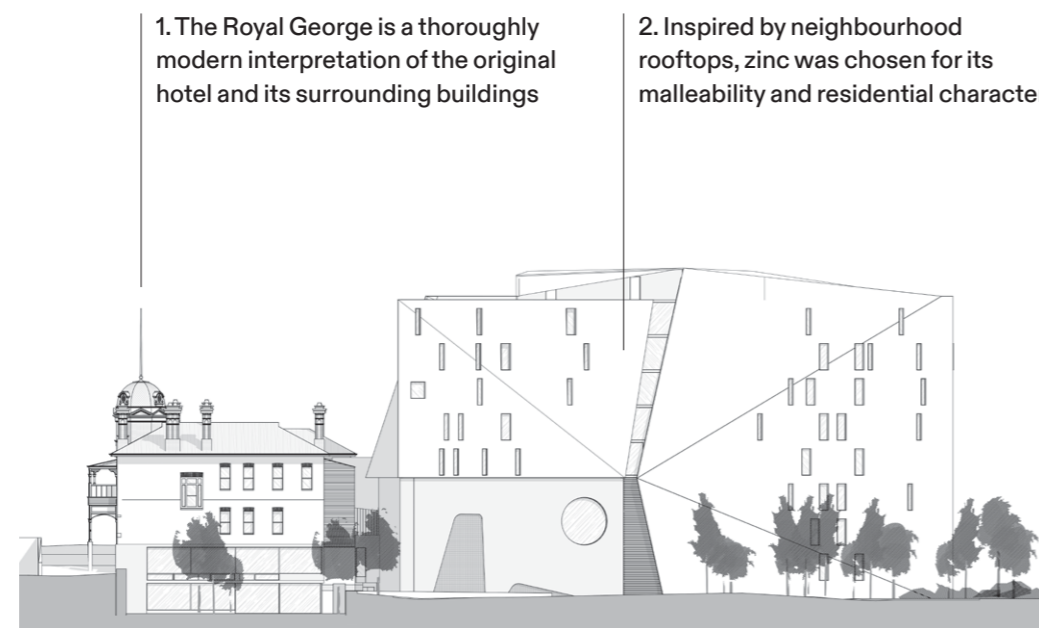


Rising from a unique triangular site, The Royal George is a thoroughly modern interpretation of the original hotel and its surrounding buildings. Angular forms shift and expand on varying planes, with the first level extending from the base of the heritage structure. At its northern tip, the pillar-like appearance is a counterpoint to the cupola on the historic building.

A limestone base runs the length of Duke Street, while the remaining façade is wrapped in zinc. Inspired by neighbourhood rooftops, zinc was chosen for its malleability and residential character. So unique, there's nothing like it. Stepping heights allow the hotel and residential building to complement each other, maximising windows, views and natural light.

Orientated to the west, the apartments capture outlooks to the river, harbour and beaches. Scattered windows create ambiguity of scale while filtering the afternoon sun. Double glazing assists with temperature control and east-facing windows have acoustic glass.

Looking up from the street, the Level 4 podium garden juxtaposes the zinc façade, softening its scale. Cascading foliage will drape down the podium, while eucalyptus trees add height to the garden space. A variety of native and coastal plants provide lush greenery. The rejuvenated streetscapes will see layered planting and deciduous or flowering trees, adding vivid colour through every season. From public domains to private spaces, the considered architectural approach aims to enhance the everyday experience.



EXTERIOR



East Fremantle is a special place. Tucked away, it's only 20 minutes from Perth CBD, and five minutes from inner Fremantle and the surrounding beaches.

The Royal George offers unrivalled proximity to the best of the surrounding area.



The redevelopment of The Royal George is a project of passion for Saracen Properties. Embracing the challenge of revitalising a much-loved local icon, Saracen have worked closely with renowned Fremantle architectural practice spaceagency.

The result is a culmination of extraordinary dedication, patience, and creativity. Together, it's an exceptional team, delivering the vision for the new Royal George.

SPACEAGENCY *AND* SARACEN

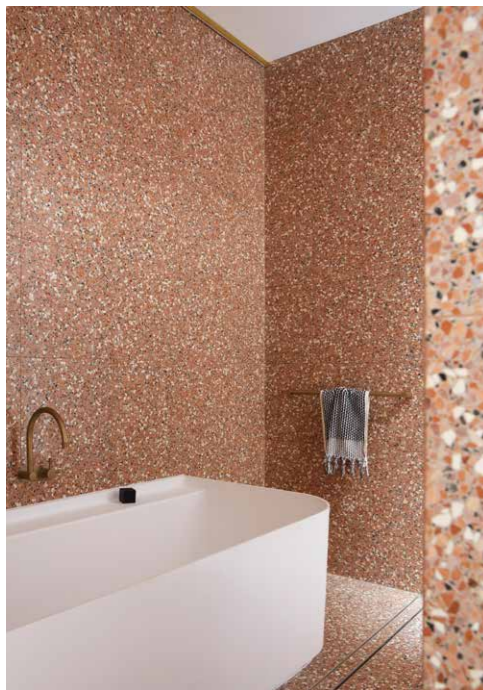
spaceagency architects is a design based architectural practice with a strategic and expressive approach that seeks opportunities for joy and delight in all of their work. The practice is focused on the experiential quality of spaces and how this can enrich the lives of the people who inhabit them.

The work of the practice can range from subtle, nuanced interventions, customised and crafted, to bold and unexpected propositions humming with playful energy. Their process is agile and unconventional, with a strong sense of place and storytelling as the common thread in all projects.

The practices' body of work reflects the diverse interests of the team and covers a wide range of architectural commissions including individual and multiple housing, interiors, furniture, hospitality, adaptive re-use, commercial, institutional and urban design. They have considerable experience in restoring and refurbishing historic buildings and delight in applying an intelligent design approach to challenging and difficult sites.

The practice has received local and national recognition for its built work, including numerous state and national Australian Institute of Architecture Awards, heritage, and hospitality awards.

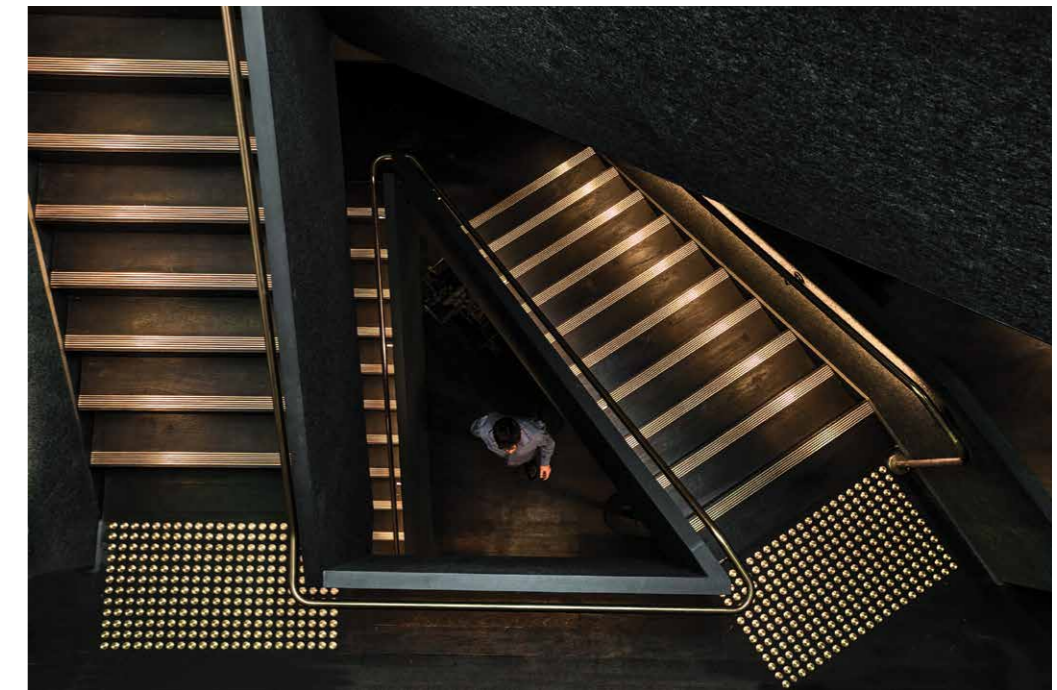
Weeties Apartment,
North Fremantle



Rule Street,
North Fremantle



Premier Mill Hotel,
Katanning



Saracen Properties

Founded in 1993, Saracen is a family-owned property developer with a large portfolio of retail, residential, industrial and commercial office projects, predominantly in Western Australia. For almost 30 years, they have successfully completed projects valued in excess of \$1.5 billion, only taking on notable projects of significance. Through the years, they have built strong, long-term relationships with their tenants, clients and partners.

Saracen continue to collaborate with some of Australia's most reputable names in the industry. Their philosophy is quality over quantity, every time.

Gnarabup Beach Houses



East Fremantle Apartments



Saracen Estate, Margaret River



